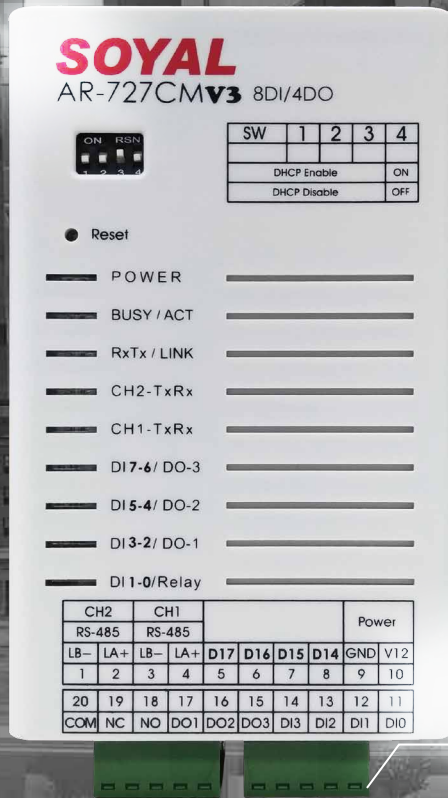


AR-727-CM-IO-0804M

Serial-to-Ethernet Server with I/O Module



Multi-Modbus Protocol Supported

TCP/IP to Wiegand
 TCP/IP to Serial
 To get status of on board I/O, Modbus TCP or Modbus RTU over TCP are supported
 Modbus TCP to Modbus RTU Auto Conversion (Applicable for Ethernet & WIFI)

TCP connection LED indicator

ACT led indicating TCP connection status for visual check and trouble shooting.

Surge Protection

Power: Bi-directional avalanche breakdown device
 RS485: Bi-directional avalanche breakdown device

I/O with optical Isolation

For anti-electromagnetic interference

Features

Modbus

RTU

Modbus/RTU protocol

Support (RS485) ModBus & HEX Command to work with SOYAL system or 3rd SCADA



Customizable Firmware

In-field firmware update to support customized firmware per conditional logic control



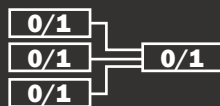
High-speed Serial Buffer

Supporting serial buffer 1 K each channel to prevent data lost when massive data transmitting



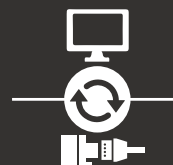
IoT Application

Wide applications in IoT monitoring, Factory Automation or remote monitoring equipment.



Multi-Function Ethernet Networking Server

Two RS485 port for ModBus RTU over TCP or HEX to connect I/O module or SOYAL Access Control for releasing all doors when fire alarm.



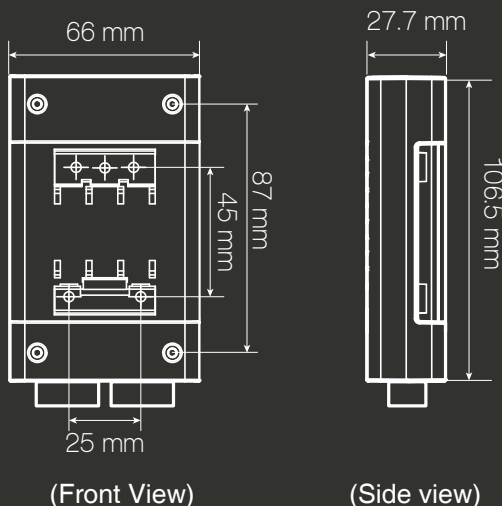
Multi-data conversion

Supporting TCP/IP to WG, TCP/IP to Serial, TCP/IP to I/O.

SPECIFICATION

Model No.		AR-727-CM-IO-0804M		
Hardware	Interface	Ethernet	10/100 Mbps Base T Ethernet <--> RS485	
		Serial port (CH1/CH2)	RS485 *2 Baud Rate 2400 bps - 115200 bps (By order: RS232, RS232+RS485) Auto detect suppor TCP/Server 、TCP/Client 、UDP Mode	
		Digital Inputs/Outputs or WG port	8 Digital Input / 4 Digital Outputs: 1 Relay Output + 3 DO or DO-1 & DO-2 Output WG 128bits maximum, supporting user defined format, auto add even parity bit and odd parity bit and various format, etc.	
	Protocol		ModBus-TCP, ARP, IP, TCP Client, UDP, ICMP, HTTP, DHCP, NetBIOS	
	Serial Buffer		1K each channel	
	LED Indicator		Power, Communication ,DI/DO	
	Watchdog Function		Yes	
	Surge Suppression		400W peak power dissipation. Clamping time < 1 picosecond (theoretical) Power: bi-directional avalanche breakdown device. RS485 bi-directional avalanche breakdown device.	
	Fuses		Dual PTC Protection For Power & RS485	
	Isolation		optical 5 kV	
	Power Supply		9-24 VDC	
	Power Consumption		<2W	
Dimension (mm)		106.5(W)x66(H)x27.7(D)		
Weight (g)		86±5		
Software	OS Supported	Windows 7 / 8 / 10, Win Server 2008/2012/2016		
	Network / Device setting	701Server, 701Client, HTTP Web browser		
Enviroment	Operating Temperature	-20°C ~ +65°C		
	Storage Temperature	-25°C to +70°C		
	Operating Humidity	20%~90%		
	Storage Humidity	5%~95%		

INSTALLATION(mm)



HOW TO ORDER

AR-727-CM-IO-0804M

Controller Option
IO=I/O Module Series

Input Qty / Output Qty
0804=8 Input & 4 Output

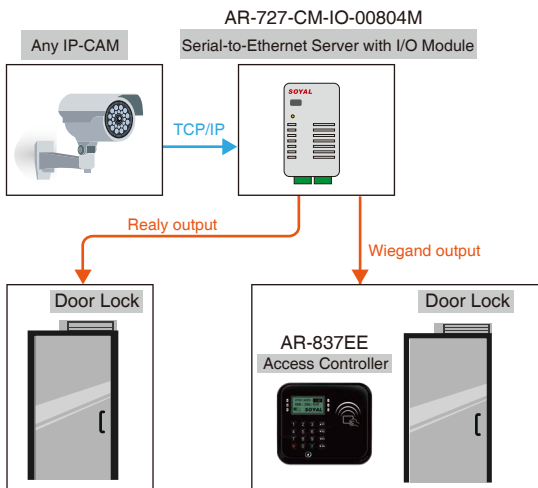
Output Type
M=Mosfet

APPLICATION & STRUCTURE DIAGRAM

● Seamless integration with Face Recognition & Access Control System

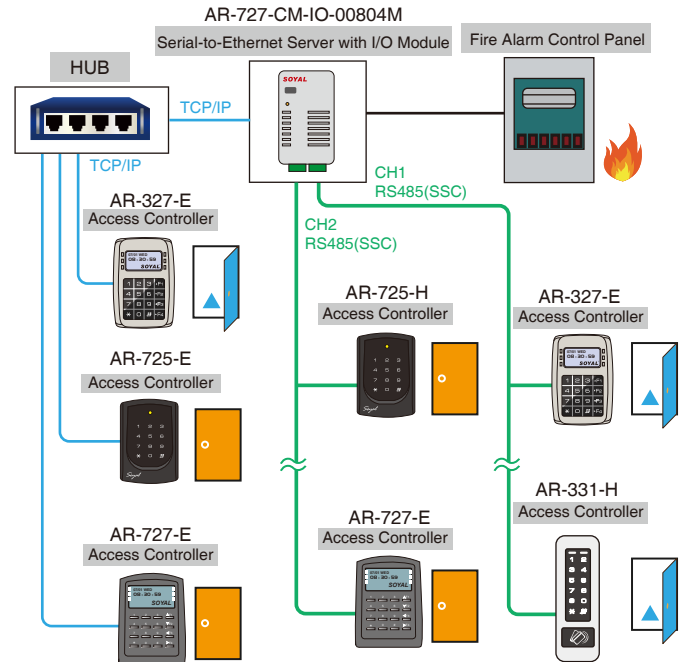
The most flexible way to integrate any IP-Based devices, with AR-727-CM-IO-0804M Serial to Ethernet Networking Device (with Digital Input/Output), such as IP-CAM, IP-Face Recognition, IP-LPR (License Plate Recognition), I/O trigger electric lock, etc. No need other software.

Supporting TCP/IP to Wiegand output. Help easy integration among surveillance system and access control system as total solution with any brand.



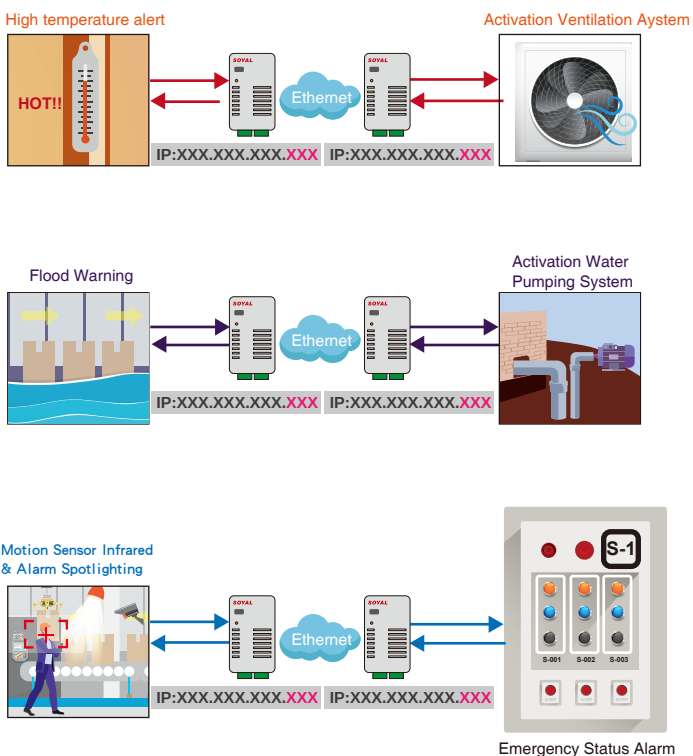
● Fire-Alarm release all doors

Providing various of customized firmware to meet all customer needs, eg. release all doors or specified doors via RS485 or Ethernet once fire-alarm event



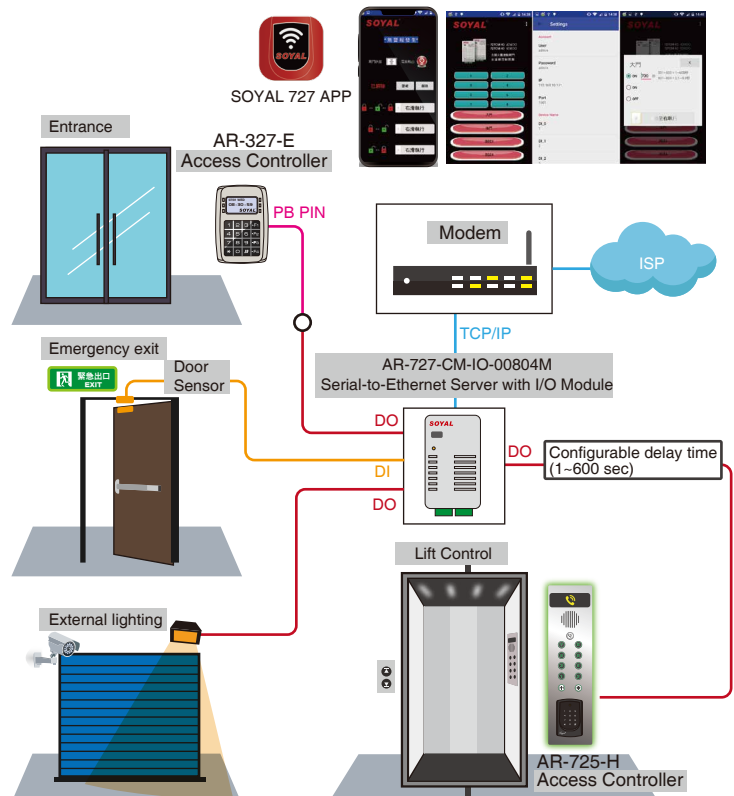
● Remotely I/O linkage control application

AR-727-CM-IO-0804M can fulfill the linkage control in different locations such as trigger DI in location A; linkage DO in location B. Suited to remote control equipment or alarm warning linkage.



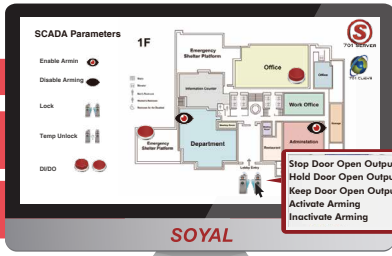
● Mobile APP - I/O control lighting, electric lock & door contact status

SOYAL 727APP working with AR-727-CM-IO-0804M module that has built-in 8 digital inputs and 4 digital outputs, each I/O name can be self-defined, showing status of each DI; setting Normal Open/Normal Close of each DO with delay time (0.1~600 seconds) to fulfill smart life style through mobile APP.



PERIPHERALS / ACCESSORIES

SCADA Solutions



Remotely control I/O status

Support various devices on one Scada Mapping

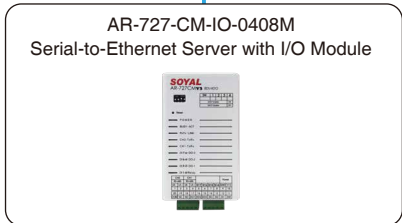
Create multiple windows for each Scada Mapping

Set up abnormal events indicator for pop-up message

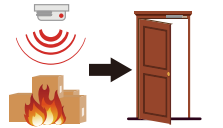
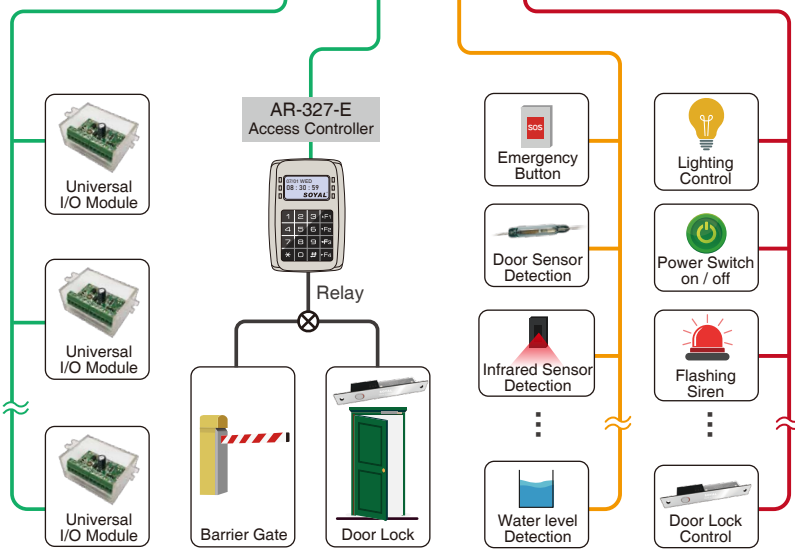
New icon status and mapping is available

Create your own icon and mapping

Ethernet



CH1 RS485 CH2 RS485 DI DO

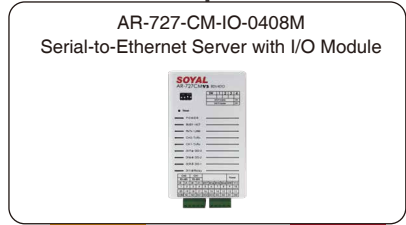


TCP/IP convert to RS-485 (2 Channel) + Release all door locks in fire event

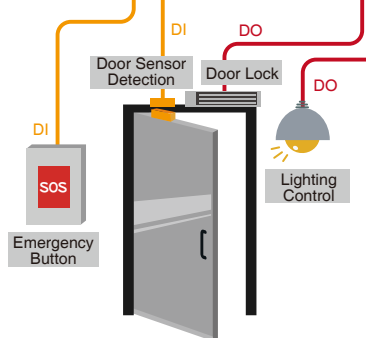


Remote I/O monitoring and control

*SSC(SOYAL SECURITY COMMUNICATION)



DI DO



USB serial I/O control application

