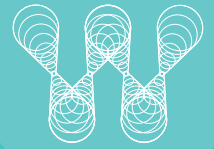




Electric Bolt

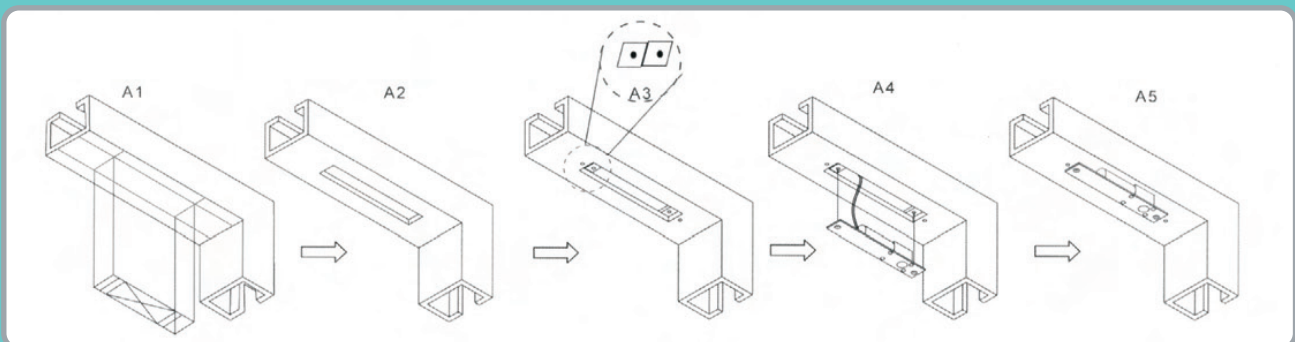
SPECIFICATIONS AND DETAILS

Model **DB-300**



- **Face Plate : 205L x 35W x 41H (mm)**
- **Strike : 90L x 25W x 2H (mm)**
- **Bolt : 16 mm DIA Stainless Steel**
- **Solid Bolt : 800 Kg Holding Force**
- **Voltage : 12 VDC**
- **Operation Current : 950 mA**
- **Standby Current : 120 mA**
- **Suitable for : Wooded Door, Glass Door**
- **Time : 0, 2.5, 5, 9 sec**
- **Fail Safe : Locked when Energized**
- **Optional Bracket : ABK-600, ABK-700**

SUGGESTED INSTALLATION POSITION



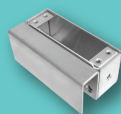
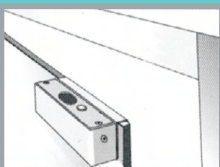
A1
Place lock Body template to match with door Frame center line.

A2
Cut hole

A3
Fix mounting plate (For hollow metal frame)

A4
Connect wires

A5
Mount lock body on the door frame and test.



ABK-600 Full Glass Door Leaf

ABK-700 Full Glass Door Leaf and Door Frame

