



Aerial Outdoor Splitter 1xN Closure

UF-3042SP Fiber Optic Splice Closure is suit for block less splitter or bare splitter, the scope of application is aerial mounting, wall mounting.

Applications

- Suitable for bunchy fibers.
- Aerial mounting, Wall mounting.
- It's especially applicable to FTTH optical fiber distribution.

Features

- The closure adopts horizontal mechanical sealing and advanced internal structure design, which was made from high grade Polycarbonate.
- It can be installed 1:4, 1:8 or 1:16 PLC splitter.
- 16 ports – Round type (3.5mm) or Flat type (2x3mm) drop cable both ends in and out, which is suitable for straight-through the fiber cable.
- The closure is spacious enough for winding and storing fibers.
- The patented sealing structure keep good sealing performance after re-entry and re-using.
- Support IP65 Standard.
- Easy open and close of closure with clip lock.
- 24 cores Fusing Splice available (Max. 48 cores).

Capacity

Outside dimension	:	350x210x110 mm
Weight (w/out box)	:	1,950g
Main cable ports	:	4 ports, Φ8mm – Φ16mm
Drop cable ports	:	16 ports, 3.5mm or 2x3mm
Max. capacity of	:	Bunchy 24 – 48 cores
Fiber Optic Splice Closure.		

Order Information

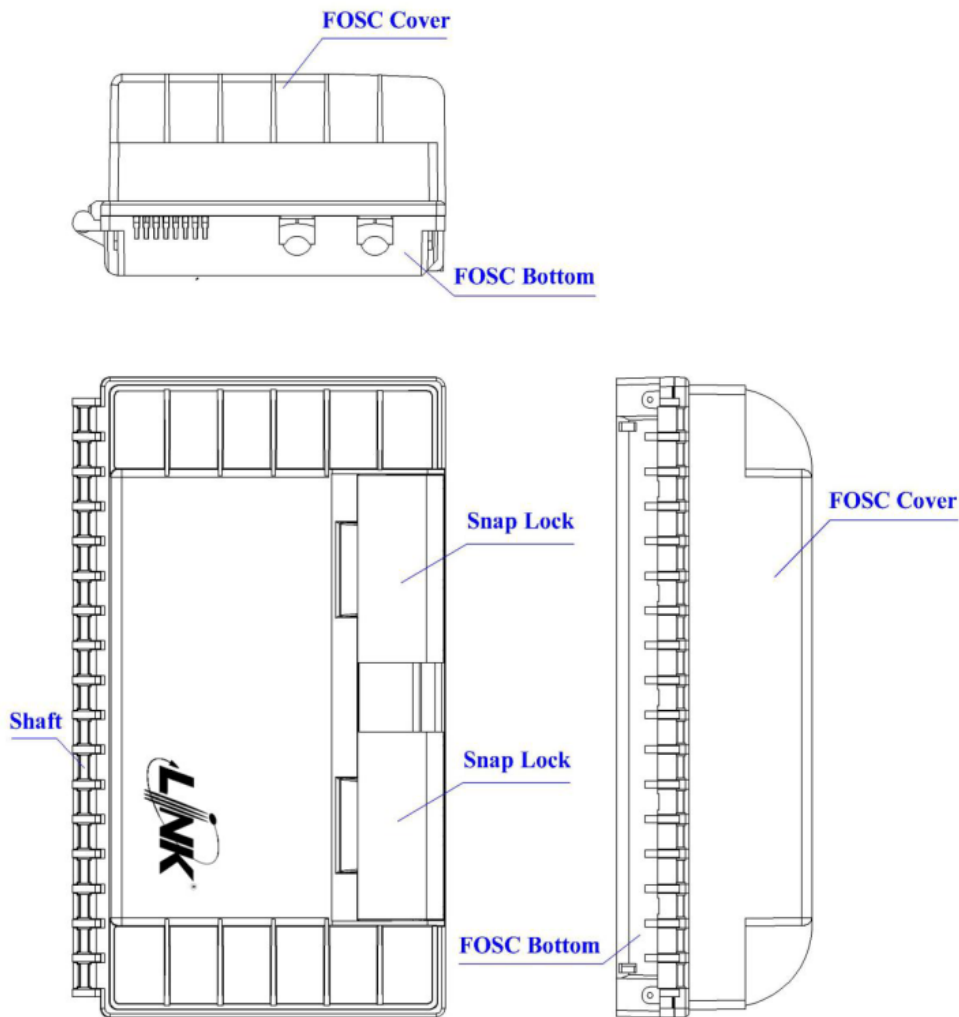
Descriptions	Part Number
FTTH Aerial Outdoor Splitter 1x4 Closure	UF-3041SP
FTTH Aerial Outdoor Splitter 1x8 Closure	UF-3042SP
FTTH Aerial Outdoor Splitter 1x16 Closure	UF-3043SP

Accessories

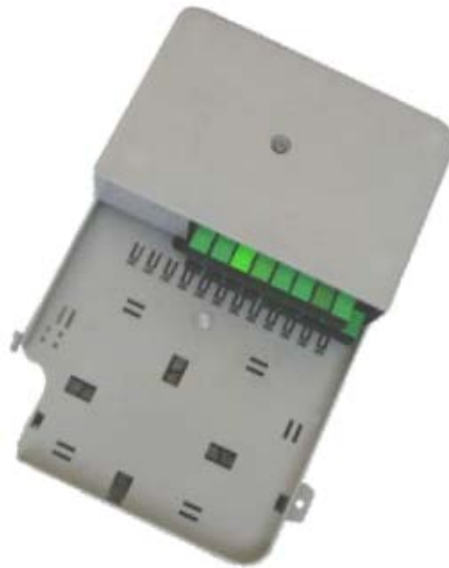
Hanging hook
 Labeling paper
 Cable tie
 Seal tape & Oil
 Insulation tape
 Installation manual

Heat shrinkable protective sleeve
 Buffer tube
 Sandpaper
 Earthing wire
 Cleaning tissue (Alcohol tissue)

Structural Drawing



Splice Tray Specification



Splice Tray Capacity	Splitter Tray	Adapter Type	Number of Adapter	Max. Capacity	Dimension
24-48	1:4, 1:8, 1:16	SC/APC	Max. 16	24-48F	240x157x22mm