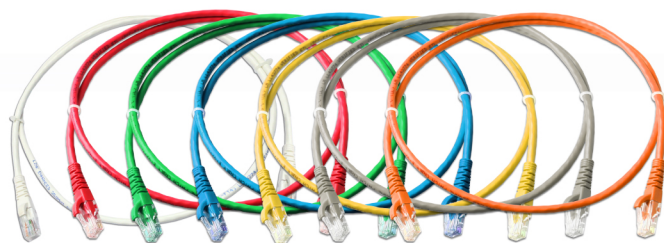


These cables feature all the benefits of professional assembly with manufacture moulding to help them survive the rigors of a desktop environment, LINK offers fully Booted Category 5e (CAT 5E) Patch Cords that will give you years of dependable use these patch cords are nearly impossible to damage! It's a smart and sound investment. All of the colored patch cords are T568B pinning with 100% tested.

## SPECIFICATION

Standard	: ANSI/TIA-568-C.2 Category 5e, ISO/IEC-11801:2002 Class D and EN50173-1
Application	: IEEE802.3, 1000Base-T, 10/100Base-TX, 4/16 Token ring, 155/622 and 1.2G ATM, POE, ISDN, VoIP and other
Cable	: Stranded wire flexible UTP Category 5e Cable
Color	: White, Red, Green, Blue, Yellow
Connector	: Category 5e RJ45 modular Plugs with 50 micro-inches Gold Plating over Nickel Plated and Phosphor Bronze
Wire Size	: 24AWG
Slim Boot	: Molding from manufacturer are designed to protect Plugs and Cables
Q.C	: 100% factory assembly and testing
Approvals	: UL/cUL Listed E197771 and Intertek Channels Test
Certified	: Lead-free & RoHS Compliant by TUV



CAT5E RJ45 to RJ45 Patch Cord

Part No.	Description	Length (m.)
US-5003-X	CAT 5E RJ45 to RJ45 PATCH CORD	1
US-5006-X	CAT 5E RJ45 to RJ45 PATCH CORD	2
US-5010-X	CAT 5E RJ45 to RJ45 PATCH CORD	3
US-5015-X	CAT 5E RJ45 to RJ45 PATCH CORD	5
US-5020-X	CAT 5E RJ45 to RJ45 PATCH CORD	10

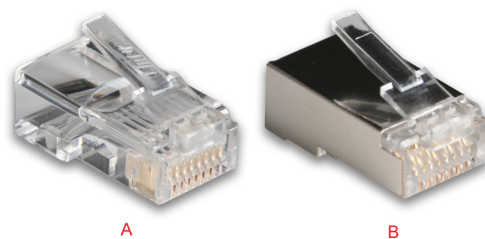
X Color = 1 (White), 2 (Red), 3 (Green), 4 (Blue), 5 (Yellow), 6 (Black), 7 (Gray), 8 (Orange)

## Category 5e RJ45 Modular Plugs

LINK Category 5e RJ45 Plug is designed for both field terminated of solid UTP and stranded wire for Patch Cords Assembly. The body is transparent to see the 3 prong contacts and wire inside which terminated. The mechanical of inner body is performed to easy terminated by crimp tool. LINK RJ45 Plug is suitable for all of standard cable 26-22 AWG UTP or 26-22 AWG F/UTP for shield plug. The performance with LINK Cable CAT5E exceeds ANSI/TIA-568-C.2 requirement.

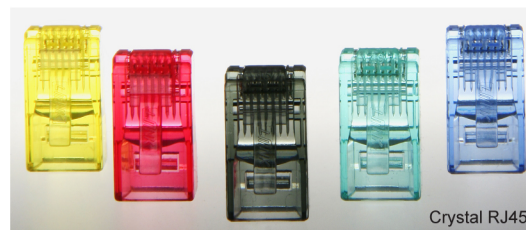
## SPECIFICATION

Standard	: ANSI/TIA-568-C.2 Category 5e, ISO/IEC-11801:2002 Class D and EN-50173-1
Housing	: Polycarbonate, UL94V-0 with LINK logo
Contact	: 3 Contact points, Phosphor Bronze with over 50 micro-inches gold plating
Accept Wire	: 26AWG - 22AWG Solid & Stranded Wire
Approvals	: UL/cUL Listed and Intertek Channels Test
Certified	: Lead-free & RoHS Compliant by TUV



Part No.	Description	No. of Position	Figure
US-1001	CAT 5E RJ45 Modular Plug, HP	8	A
US-1003	CAT 5E RJ45 Modular Plug, SHIELD	8	B
US-1051X	CAT 5E RJ45 Modular Plug, HP, Crystal	8	C

X Color = 2 (Red), 3 (Green), 4 (Blue), 5 (Yellow), 6 (Black)



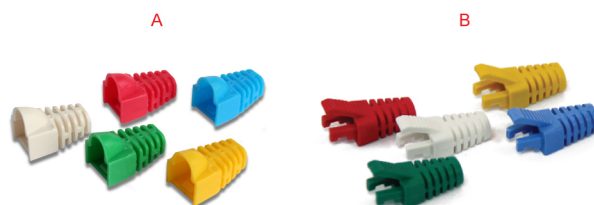
Crystal RJ45

## Modular Plug Boots (CAT 5E)

LINK Plug Boots are designed to cover which protect RJ45 plugs and cables. It produces from special PVC with rubber for protect each of plug and easy to remove. It helps you solve your hard time finding the end of cable for maintenance or relocation or makes organizing your patch cord system quickly. It is suitable for both field terminated or patch cord maker and also for unshield and shield plug.

Part No.	Description	Packing	Figure
US-600X	CAT 5E Plug Boot	10 Each/Pkg	A
US-601X	CAT 5E Locking Plug Boot, OD 5.5 mm	10 Each/Pkg	B

X Color = 1 (Ivory), 2 (Red), 3 (Green), 4 (Blue), 5 (Yellow)



\* Revised 8/2014